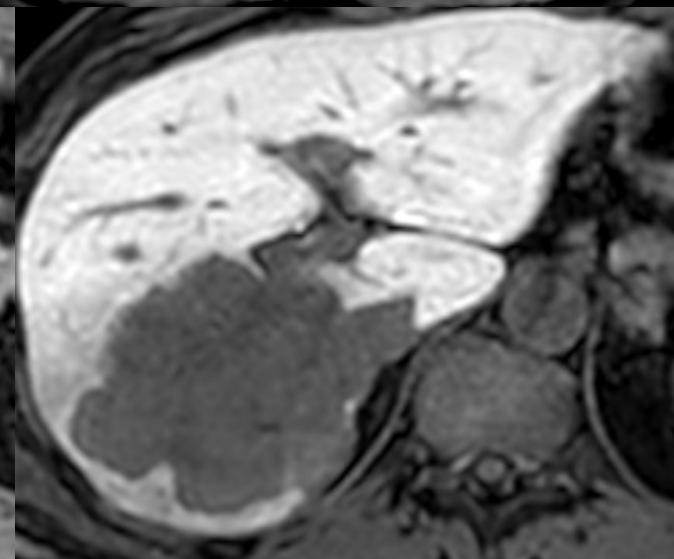
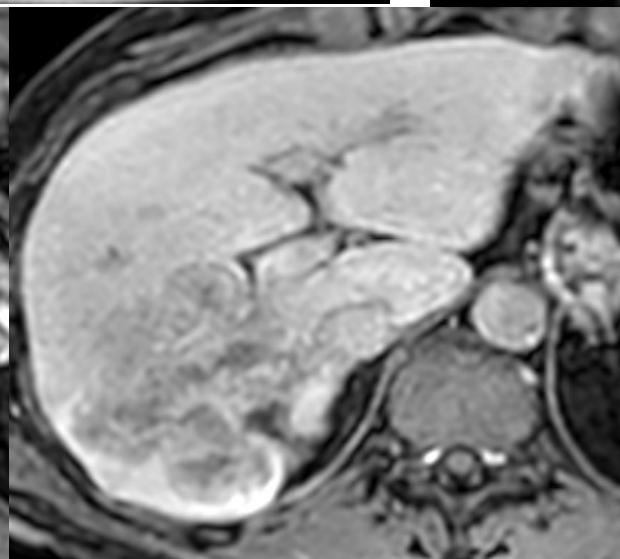
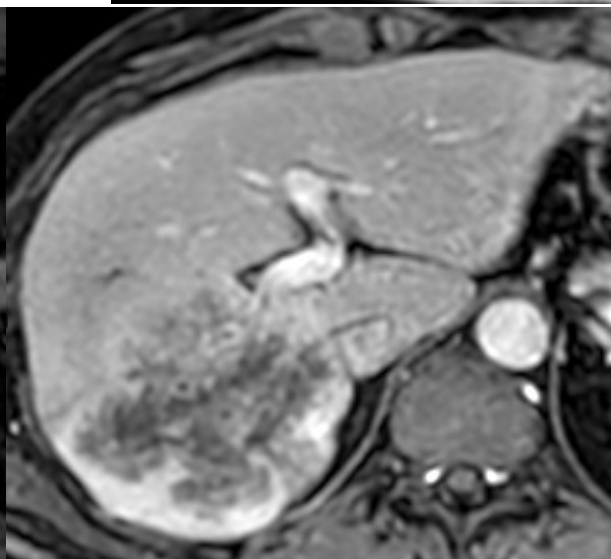
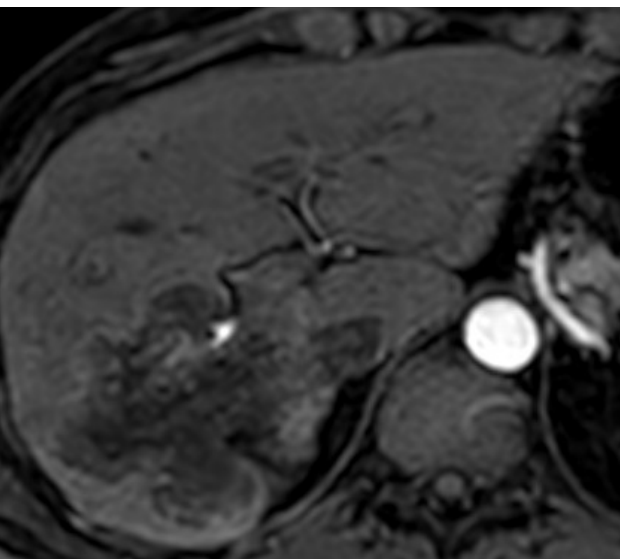
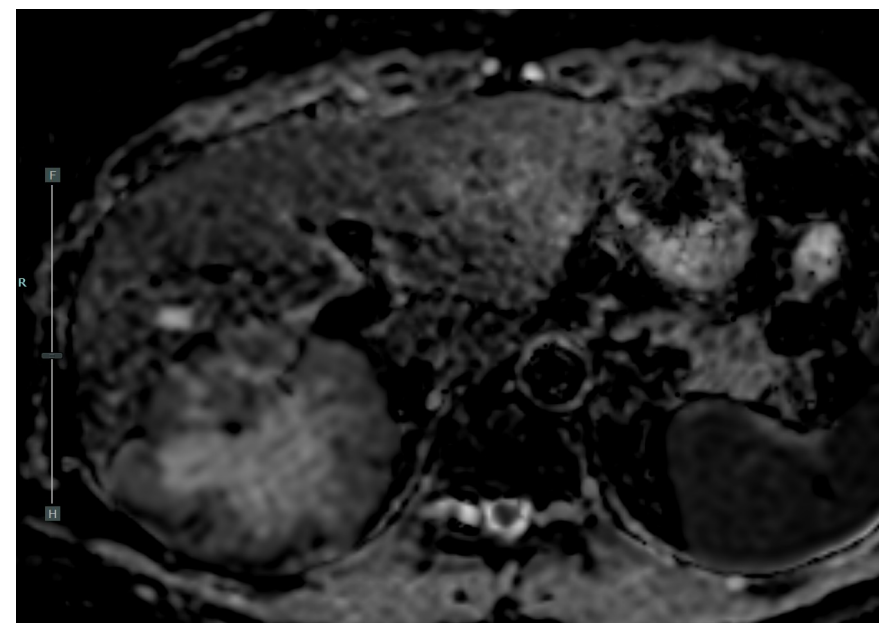
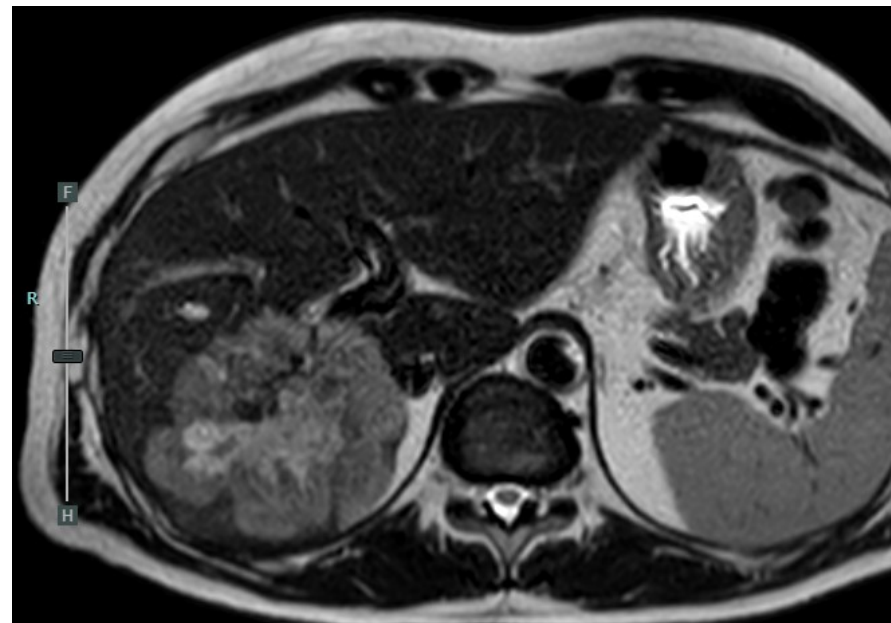


PROVA PRATICA 3 :

Maschio, 55 anni, effettua RM ADDOME SUPERIORE con mdc ev dopo Ecografia epatica di follow-up per pregressa asportazione di melanoma tibiale infiltrante, che identifica una lesione epatica; markers tumorali negativi.



- **Descrivi i reperti più significativi.**
- **Indica la Diagnosi più probabile ed eventuali diagnosi differenziali.**