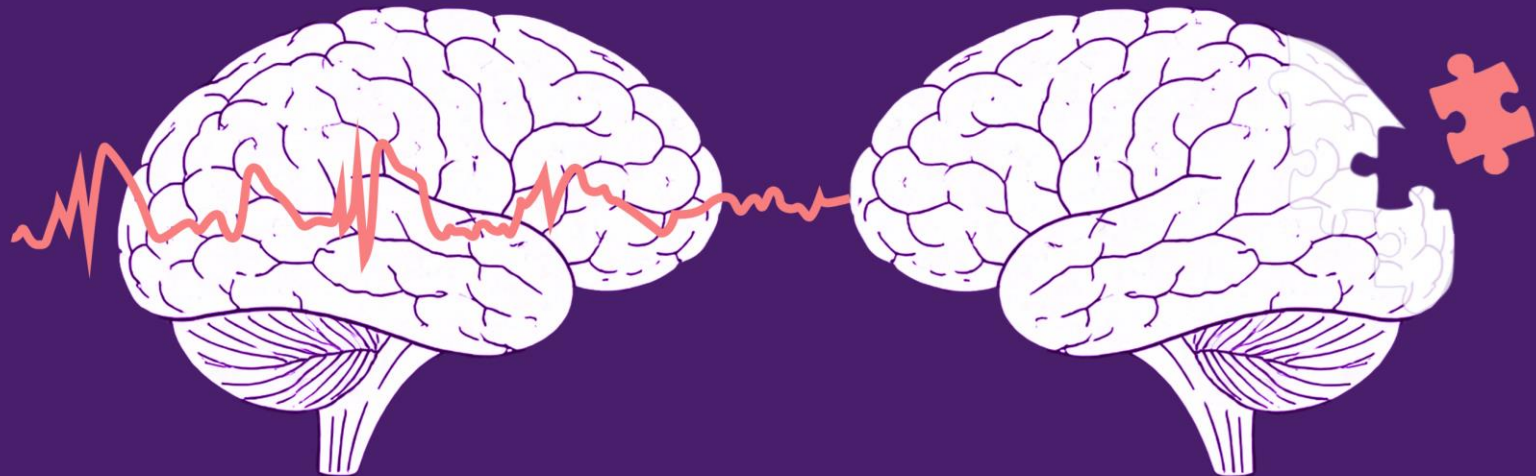


Late-Onset Epilepsy of Unknown Origin: Emerging Insights and Links to Neurodegeneration



10 APRILE 2026

**Aula Vecchiati, Ospedale Civile Baggiovara
via Pietro Giardini via 1355
41126 Baggiovara (MO)**

PROGRAMMA

14:15–14:30 Opening and Introduction

Prof. Anna Elisabetta Vaudano

Prof. Marco Vinceti

Session I

Chairs:

Prof. Stefano Meletti

Prof. Giovanna Zamboni

14:30–14:50 «Cognitive decline in epilepsy:
the epileptologist's perspective»

Prof. Cinzia Costa

14:50–15:10 «Epilepsy in cognitive decline:
the cognitive neurologist's perspective»

Dr. Manuela Tondelli

15:10–15:30 «The CLUE Study»

Dr. Alice Ballerini

15:30–15:50 «Inflammatory Mediators in
Late-Onset Epilepsy»

Dr. Laura Librizzi

Session II

Chair:

Prof. Anna Elisabetta Vaudano

16:00–16:45 Invited Lecture

**«Late-Onset Unexplained Epilepsy: Insights
from the DECODE-LOUE Study»**

Prof. Benjamin Cretin

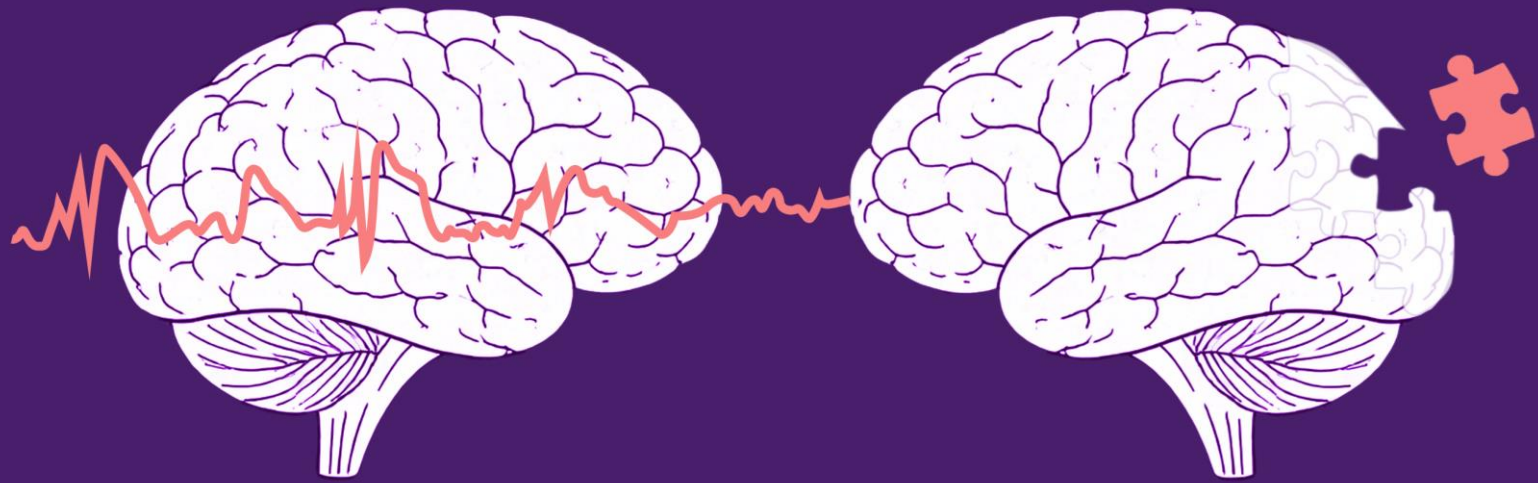
16:45–17:30 Round Table

Prof. Benjamin Cretin, Prof. Giovanna Zamboni,
Prof. Giulia Curia, Prof. Stefano Meletti, Dr.
Manuela Tondelli, Prof. Anna Elisabetta Vaudano

17:30-17.45

Concluding remarks

Late-Onset Epilepsy of Unknown Origin: Emerging Insights and Links to Neurodegeneration



10 APRILE 2026

**Aula Vecchiati, Ospedale Civile Baggiovara
via Pietro Giardini via 1355
41126 Baggiovara (MO)**

Alice Ballerini

University of Modena and Reggio-Emilia

FACULTY

Cinzia Costa

University of Perugia

Benjamin Cretin

University of Strasbourg

Giulia Curia

University of Modena and Reggio-Emilia

Laura Librizzi

IRCSS C. Besta, Milano

Stefano Meletti

Neurophysiology Unit and Epilepsy Centre, Neuroscience Department, AOU Modena
University of Modena and Reggio-Emilia

Manuela Tondelli

Neurology Unit, OCB Hospital, Neuroscience Department, AOU Modena
University of Modena and Reggio-Emilia

Anna Elisabetta Vaudano

Neurophysiology Unit and Epilepsy Centre, Neuroscience Department, AOU Modena
University of Modena and Reggio-Emilia

Marco Vinceti

University of Modena and Reggio-Emilia

Giovanna Zamboni

Neurology Unit, OCB Hospital, Neuroscience Department, AOU Modena
University of Modena and Reggio-Emilia

Late-Onset Epilepsy of Unknown Origin: Emerging Insights and Links to Neurodegeneration



10 APRILE 2026

**Aula Vecchiati, Ospedale Civile Baggiovara
via Pietro Giardini via 1355
41126 Baggiovara (MO)**

REFERENTE SCIENTIFICO

Neurophysiology Unit and Epilepsy Centre, Neuroscience Department AOU Modena
University of Modena and Reggio-Emilia

Anna Elisabetta Vaudano

annaelisabetta.vaudano@unimore.it

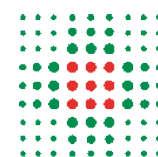
Alice Ballerini

alice.ballerini@unimore.it

Iscrizione Gratuita
Codice WHR 3804.1



UNIMORE
UNIVERSITÀ DEGLI STUDI DI
MODENA E REGGIO EMILIA



**SERVIZIO SANITARIO REGIONALE
EMILIA-ROMAGNA**
Azienda Ospedaliero - Universitaria di Modena